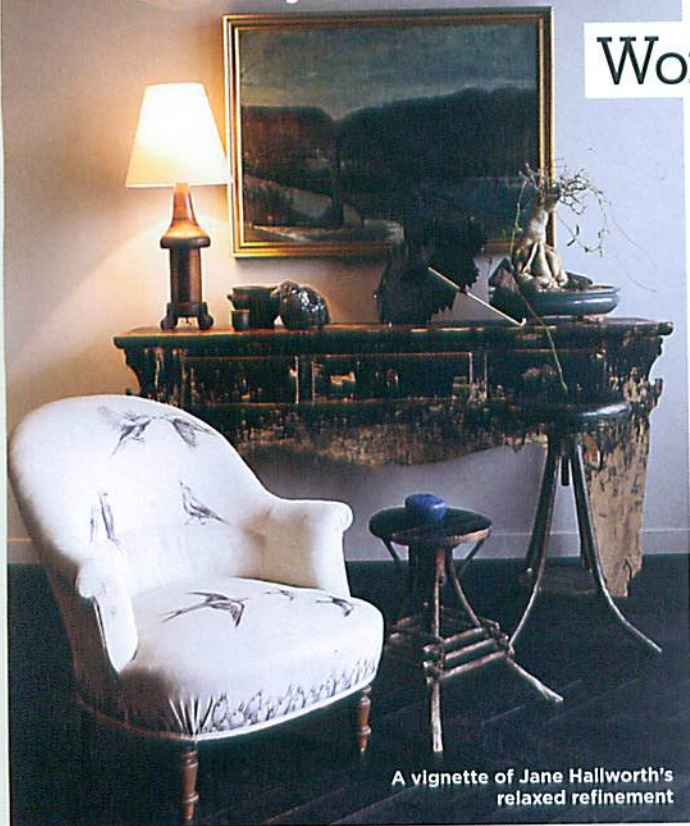


west hollywood

Worth a Detour



A vignette of Jane Hallworth's relaxed refinement

The hours of operation for interior designer Jane Hallworth's new shop sum up her unconventional approach: Open sensible hours, subject to change. "I have indeed been called a reluctant retailer," laughs Hallworth, "but I love the process of offering a narrative within this space." And what a story it is, from turn-of-the-century Bergère chairs augmented by local artist Eric Nash to butterfly works by Leslie Yeager. 605 N. La Brea Ave., 323-857-0330; hallworth.us. A.S.



L.A. LUNETTES

Benjamin Eyewear Molly black acetate sunglasses, \$180.

Shade yourself from late summer light with Benjamin Eyewear's newest array of lower-priced styles. With each pair named after a local luminary or close friend of the designer, The Guise collection is the latest addition to the L.A. sunglasses brand. Jenni Kayne, 614 N. Almont Dr., 310-860-0123. s.t.

THE CLIST

AN INSIDER'S WEHO WHEREABOUTS

Native Angeleno Michal Spitzer is a junior designer for Michael S. Smith and authors StyleCurator Blog.com. **MECOX GARDENS** "My first stop for home accessories." 310-358-9272. **KRISLYN DESIGN** "Inventive flower arrangements." 323-692-7892. **KATE SOMERVILLE** "For facials once a month." 323-930-2230. **BAZAAR AT SLS** "I love the Uni Steam Buns." 310-246-5555. **PALIHOUSE** "For drinks, the courtyard is always a good time." 323-656-4100. A.S.



Michal Spitzer



Comfort Zone

Since opening her store, **Creatures of Comfort**, in 2005, Jade Lai has steadily amassed a following with her keenly edited selection of just-under-the-radar fashion brands such as Isabel Marant and VPL. No doubt, then, that fans of her artsy aesthetic will love her debut collection, featuring sharply tailored, light wool skirts and delicate blouses. Look for the line at Lai's Melrose Avenue store as well as Steven Alan boutiques. *Creatures of Comfort*, 7971 Melrose Ave., 323-655-7855. N.C.

Creatures of Comfort striped cotton henley tank, \$105.



Sweat Garage

Power Hour

Green gym **Sweat Garage** is setting the pace in WeHo with recycled rubber floors and a training regimen that really burns. Its workout consists of 30 minutes on a treadmill plus 30 minutes of weight training with an instructor. "This is one hour where you can do no wrong," says owner Christopher Slevin. 801 N. Fairfax Ave., 323-852-9800; sweatgarage.com. J.M.H.